

Human Cell Types

Discover our broad range of human cell types, including human primary cells, stem cells and blood cells.

Human Primary Cells

Respiratory System

Human Nasal Epithelial Cells (HNEpC)

Cat. No. C-12620

Human Tracheal Epithelial Cells (HTEpC)

Cat. No. C-12644

Human Tracheal Smooth Muscle Cells (HTSMC)

Cat. No. C-12565

Human Bronchial Epithelial Cells (HBEpC)

Cat. No. C-12640

Human Bronchial Smooth Muscle Cells (HBSMC)

Cat. No. C-12561

Human Pulmonary Artery Endothelial Cells (HPAEC)

Cat. No. C-12241

Human Pulmonary Artery Smooth Muscle Cells (HPASMC)

Cat. No. C-12521

Human Pulmonary Fibroblasts (HPF)

Cat. No. C-12360

Human Pulmonary Microvascular Endothelial Cells (HPMEC)

Cat. No. C-12281

Human Small Airway Epithelial Cells (HSAEpC)

Cat. No. C-12642

Cardiovascular System

Human Cardiac Fibroblasts (HCF)

Cat. No. C-12375

Human Aortic Adventitial Fibroblasts (HAoAF)

Cat. No. C-12380

Human Cardiac Microvascular Endothelial Cells (HCMEC)

Cat. No. C-12285

Human Cardiac Myocytes (HCM)

Cat. No. C-12810

Human Coronary Artery Endothelial Cells (HCAEC)

Cat. No. C-12221

Human Coronary Artery Smooth Muscle Cells (HCASMC)

Cat. No. C-12511

Human Aortic Smooth Muscle Cells (HAoSMC)

Cat. No. C-12533

Human Saphenous Vein Endothelial Cells (HSaVEC)

Cat. No. C-12231

Human Aortic Endothelial Cells (HAoEC)

Cat. No. C-12271

Musculoskeletal System

Human Skeletal Muscle Cells (SKMC)

Cat. No. C-12530

Human Chondrocytes (HCH)

Cat. No. C-12710

Human Osteoblasts (HOB)

Cat. No. C-12720

Skin & Connective Tissue

Human Follicle Dermal Papilla Cells (HFDPC)

Cat. No. C-12071

Normal Human Dermal Fibroblasts (NHDF)

Cat. No. C-12300/C-12302

Human Dermal Blood Endothelial Cells (HDBEC)

Cat. No. C-12211/C-12225

Human Dermal Lymphatic Endothelial Cells (HDLEC)

Cat. No. C-12216/C-12217

Human Dermal Microvascular Endothelial Cells (HDMEC)

Cat. No. C-12210/C-12212

Normal Human Epidermal Keratinocytes (NHEK)

Cat. No. C-12001/C-12003

Normal Human Epidermal Keratinocytes (NHEK) GM3

Cat. No. C-12011/C-12013

Normal Human Epidermal Melanocytes (NHEM)

Cat. No. C-12001/C-12003

Normal Human Epidermal Melanocytes M3 (NHEM M3)

Cat. No. C-12422/C-12413

Umbilical Cord

Human Umbilical Vein Endothelial Cells (HUVEC)

Cat. No. C-12200

Human Umbilical Vein Endothelial Cells 2 (HUVEC 2)

Cat. No. C-12206

Human Umbilical Artery Endothelial Cells (HUAEC)

Cat. No. C-12202

Human Umbilical Artery Smooth Muscle Cells (HUASMC)

Cat. No. C-12500

Uterus

Human Uterine Fibroblasts (HUF)

Cat. No. C-12385

Human Uterine Microvascular Endothelial Cells (HUtMEC)

Cat. No. C-12295

Human Uterine Smooth Muscle Cells (HUtSMC)

Cat. No. C-12575

Kidney

Human Renal Epithelial Cells (HREpC)

Cat. No. C-12665

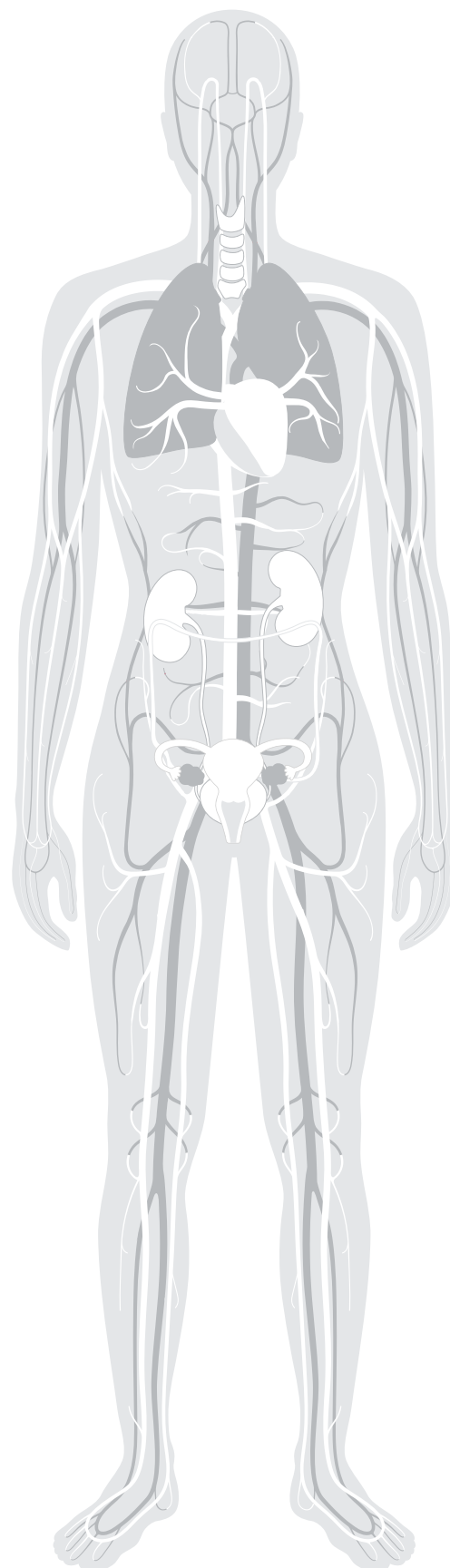
Human Renal Cortical Epithelial Cells (HRCEpC)

Cat. No. C-12660

Adipose Tissue

Human White Preadipocytes (HWP)

Cat. No. C-12732/C-12735



Human Stem Cells



Bone Marrow

Human Mesenchymal Stem Cells from bone marrow (hMSC-BM)
Cat. No. C-12974



Adipose Tissue

Human Mesenchymal Stem Cells from adipose tissue (hMSC-AT)
Cat. No. C-12977



Umbilical Cord and Placenta

Human Pericytes from Placenta (hPC-PL)
Cat. No. C-12980

Human Mesenchymal Stem Cells from umbilical cord matrix (hMSC-UC)
Cat. No. C-12971

Human Blood Cells



Peripheral Blood

Human Mononuclear Cells from peripheral blood (hMNC-PB)
Cat. No. C-12907

Human CD14+ Monocytes (hMoCD14+-PB)
Cat. No. C-12909

Human M1 Macrophages (GM-CSF) monocyte-derived
Cat. No. C-12914

Human M2 Macrophages (M-CSF) monocyte-derived
Cat. No. C-12915



Umbilical Cord

Human Mononuclear Cells from umbilical cord blood (hMNC-CB)
Cat. No. C-12901

Human CD34+ Progenitor Cells (hCD34+-CB)
Cat. No. C-12921

Discover

Customize your primary cell requirements based on specific donor criteria.

Learn more:

page.promocell.com/donor-type-request

PromoCell GmbH
Sickingenstr. 63/65
69126 Heidelberg
Germany

USA/Canada
Phone: 1-866-251-2860 (toll free)
Fax: 1-866-827-9219 (toll free)

Deutschland
Telefon: 0800-776 66 23 (gebührenfrei)
Fax: 0800-100 83 06 (gebührenfrei)

France
Téléphone: 0800-90 93 32 (ligne verte)
Téléfax: 0800-90 27 36 (ligne verte)

United Kingdom
Phone: 0800 96 03 33 (toll free)
Fax: 0800 169 85 54 (toll free)

Other Countries
Phone: +49 6221-649 34 0
Fax: +49 6221-649 34 40

info@promocell.com
www.promocell.com

© PromoCell GmbH